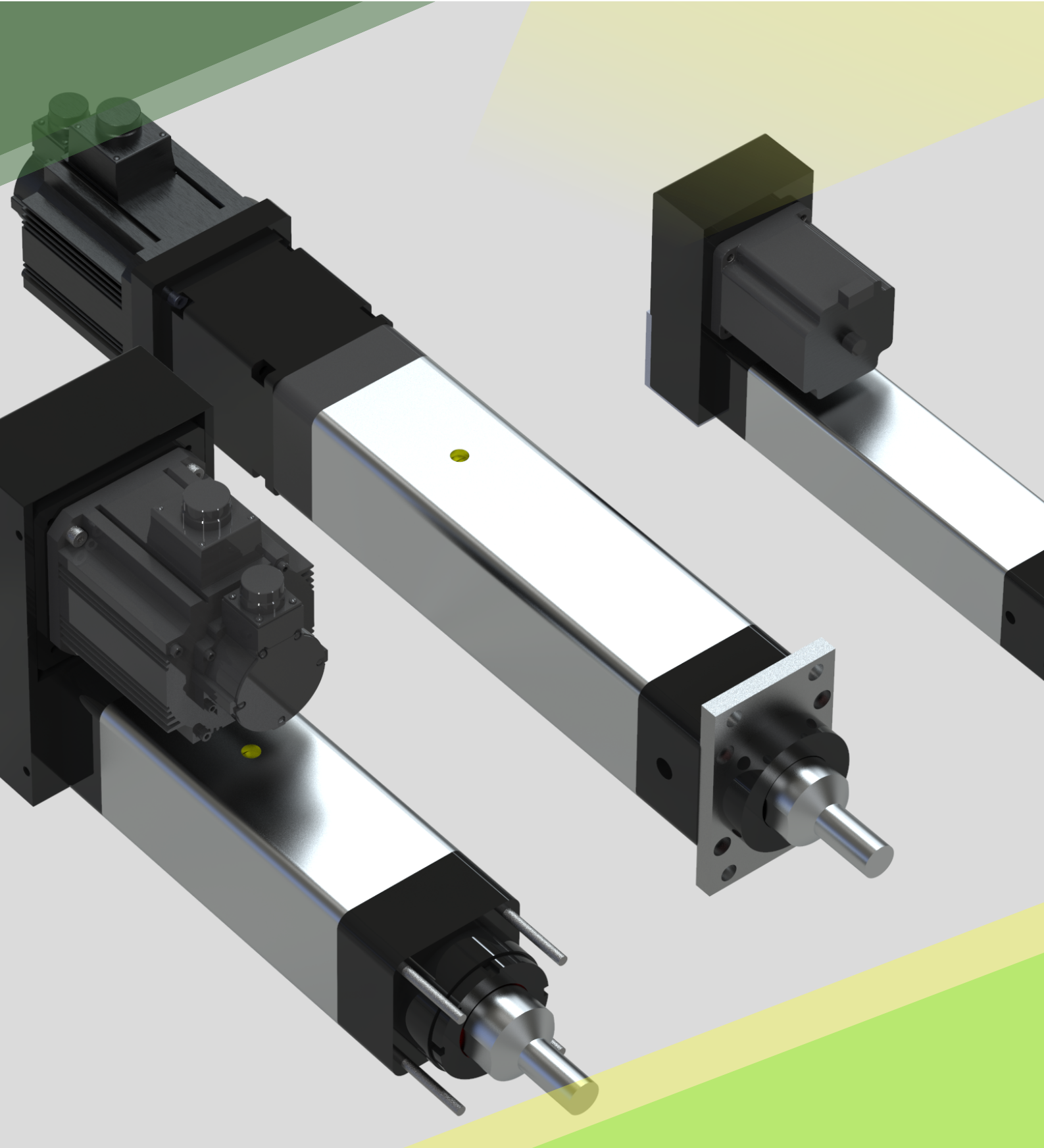


# SERVOX

## EC SERIES

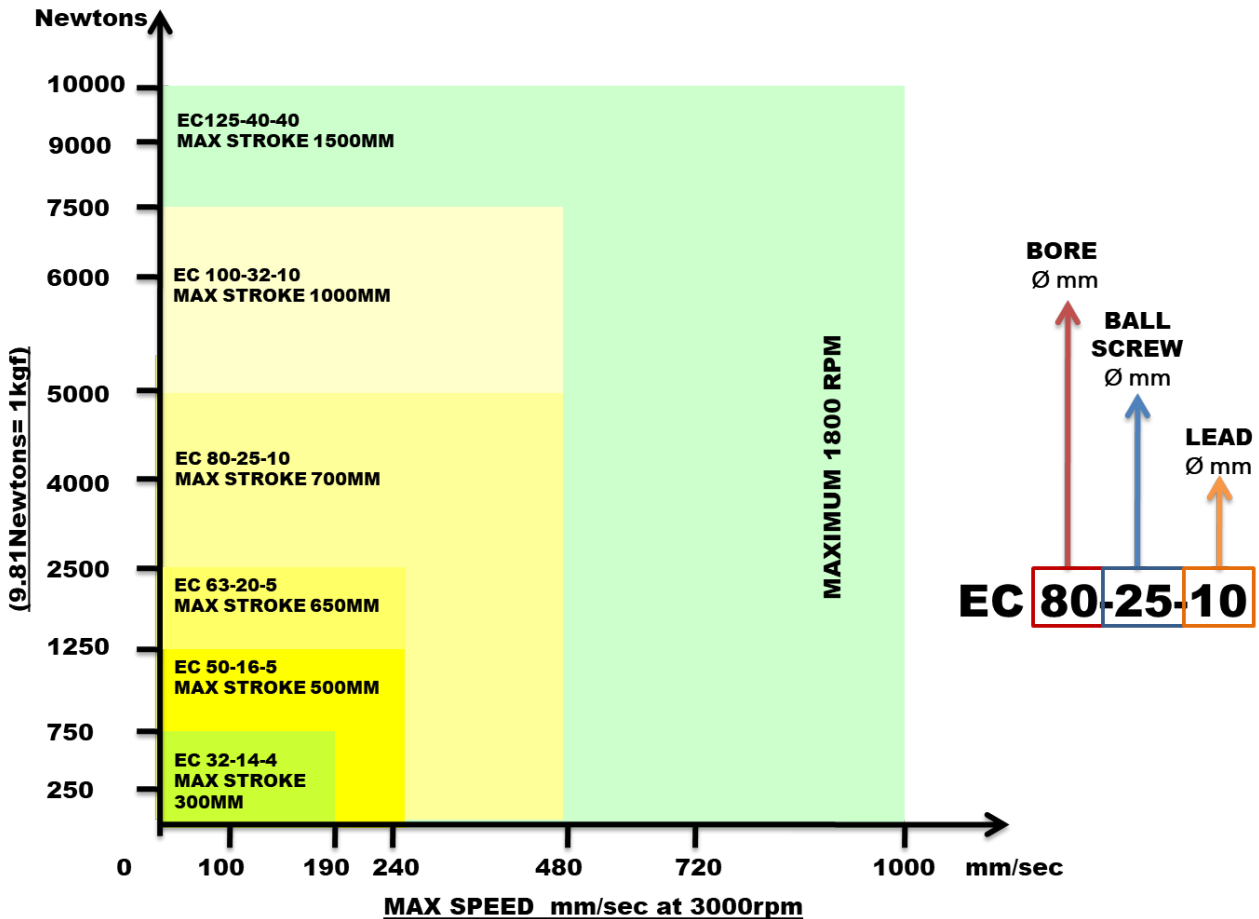


GO ELECTRIC GET SEAMLESS CONTROL OF SPEED AND FORCE SAVE ENERGY

# WHY SERVOX ELECTRIC CYLINDERS ?

Over 15 years of practical experience in manufacturing and supply of Electric Actuators, catering to diverse industries like Food and Pharma machinery, Textile, Machine tools, Welding & Testing machinery and Defense related equipment. Having an inhouse Design facility we are ready to cater any type of special or non standard requirement and customization as required.

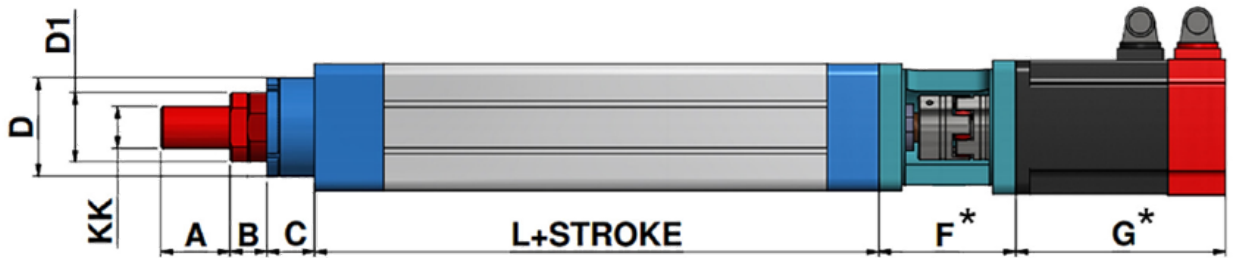
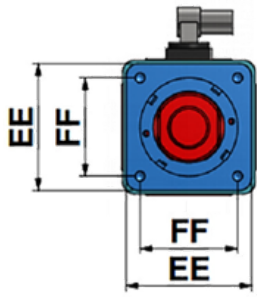
**E-CYLINDER SELECTION CHART**



MODEL	MAX THRUST FORCE (Kgf)	MAX SPEED AT 3000 RPM	MAX STROKE (mm)	ESTIMATED MOTOR TORQUE REQUIRED FOR MAX FORCE (NM)
EC 32-12-4	50	190mm/sec	300	1.3
EC 50-16-5	125	240 mm/sec	500	1.6
EC 63-20-5	250	240 mm/sec	650	4.5
EC 80-25-10	500	480mm/sec	700	8
EC 100-32-10	750	480mm/sec	1000	11
EC 100-32-32		1000mm/sec		40
EC125-40-10	1000	480mm/sec	1500	18
EC125-40-40		1000mm/sec		72

TABLE ABOVE REFERS TYPICAL VALUES

**" Soon launching Pencil Electric Cylinders"**



**ALL DIMENSIONS ARE IN mm**

MODEL	EE	FF	D	D1	KK	A	B	C	L	F*	G*
<b>EC 32-12-4</b>	45	32.5	35	22	M10 X 1.25P	22	25	21	85	Depends upon selected Motor	Depends upon selected Motor
<b>EC 50-16-5</b>	64	46.5	46	28	M16 X 1.5P	32	30	36	103		
<b>EC 63-20-5</b>	75	56.5	55	36	M16 X 1.5P	32	13	4	164		
<b>EC 80-25-10</b>	93	72	75	50	M27 X 2P	54	30	37	149		
<b>EC 100-32-10</b>	112	89	100	60	M27 X 2P	54	30	37	190		
<b>EC 100-32-32</b>	112	89	100	60	M27 X 2P	54	30	37	260		
<b>EC 125-40-10</b>	134	109.6	110	70	M36 X 3P	64	40	37	203		
<b>EC 125-40-40</b>	134	109.6	110	70	M36 X 3P	64	40	37	263		

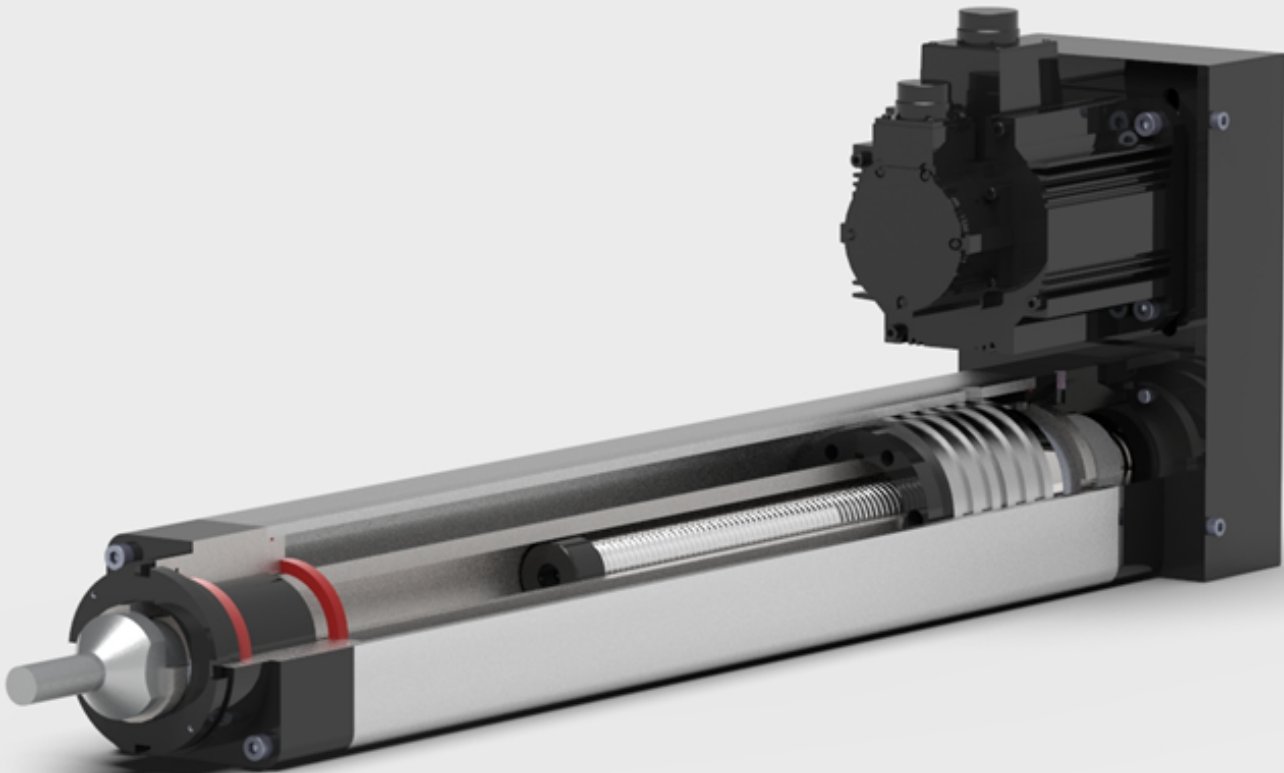
DIMENSIONS ARE SUBJECT TO CHANGE

Within Limits of speed and force indicated in TABLE 1, the typical interval for Lubrication is 200 km.

STROKE in mm	LUBRICATE EVERY	NOTE
100	10,00,000 cycles	<ul style="list-style-type: none"> <li>• USE ONLY BRANDED LITHIUM BASED GREASE.</li> <li>• NO MECHANICAL END STOPS EXTERNAL OR INTERNAL. DON'T EXCEED SPECIFIED STROKE.</li> <li>• NO CANTILEVER LOADS.</li> <li>• HIGHER FORCES, SPEEDS AND LONGER STROKES ON SPECIAL REQUEST .</li> <li>• ALL CYLINDERS COME WITH TIE RODS EXTENDED IN FRONT FOR MOUNTING AS STANDARD.</li> <li>• FRONT FLANGE OR TRUNNION MOUNTING IF REQUIRED WILL BE CHARGED EXTRA.</li> </ul>
200	5,00,000 cycles	
400	2,50,000 cycles	
500	2,00,000 cycles	
750	1,33,000 cycles	
1000	1,00,000 cycles	

## WHY ELECTRIC :

Linear Motion Actuators driven by pneumatic or hydraulic power are noisy and inefficient, are prone to leakages and have limited control and flexibility. In case of electric cylinders on the other hand the rotary motion of the servo or stepper motor is directly converted to linear motion through a ball screw or leadscrew. Acceleration, velocity and force are independently settable, whilst feedback from an encoder ensures closed loop control of positioning with corrective action if required.



## NO COMPROMISE ON QUALITY:

- We use the finest ball screws, bearings, etc. our cylinders are usually one to one replacement or substitute for standard pneumatic and hydraulic cylinders and provide seamless integration of motor, controls and technology.
- Use these wherever multiple stops, positioning accuracy, higher speeds, controlled force, smooth acceleration and deceleration importantly considerable energy saving (30-40%) is required.



**SERVOX IS A BRAND OF BIOPLAST**

 +91-98203 54162

 +91-8169 317784

 [www.servoxsystems.com](http://www.servoxsystems.com)

 [sales@servoxsystems.com](mailto:sales@servoxsystems.com)